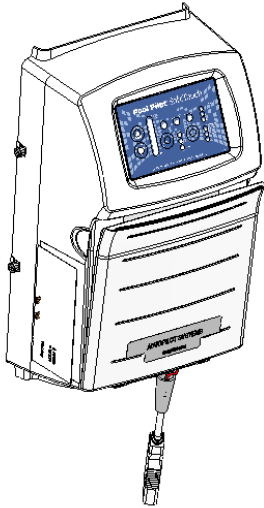
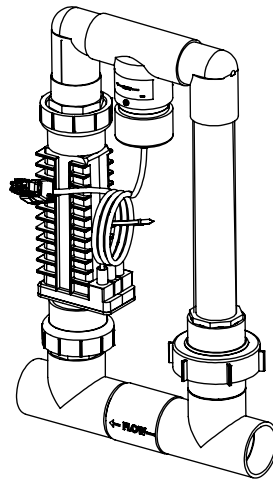


# ST-220

Soft Touch



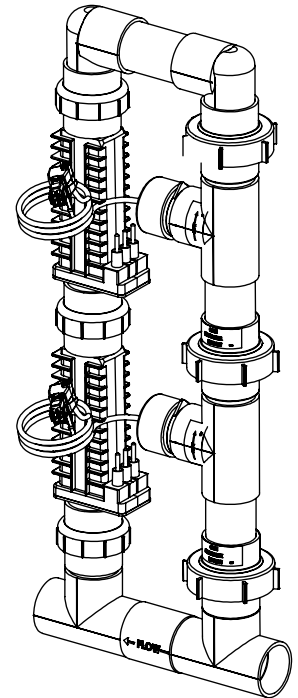
ST-220



Single System Manifold

Power Supply

PART #	DESCRIPTION
ST-220	Soft Touch Power Supply
ST-220CE	Digital Power Supply CE Version



Dual System Manifold

Single System Manifold Types

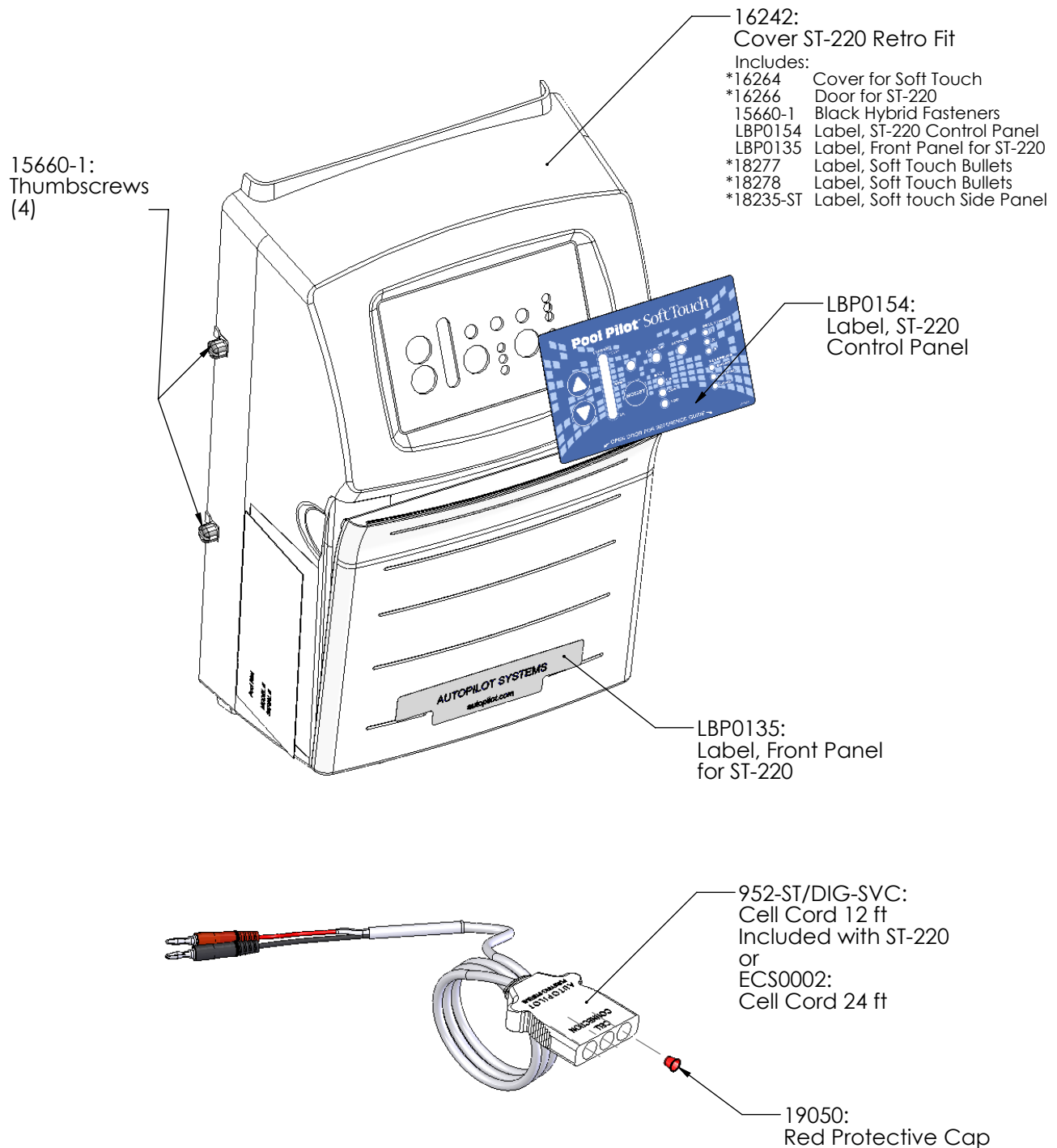
PART #	DESCRIPTION	PAGE #
PPM1	Manifold Assy with PPC1 Cell	15
PPM3	Manifold Assy with PPC3 Cell	15
PPM4	Manifold Assy with PPC4 Cell	15
PPM5	Manifold Assy with PPC5 Cell	15
PPM1M	Manifold Assy with PPC1 Cell and Metric Adapters	15
PPM3M	Manifold Assy with PPC3 Cell and Metric Adapters	15
PPM4M	Manifold Assy with PPC4 Cell and Metric Adapters	15
PPM5M	Manifold Assy with PPC5 Cell and Metric Adapters	15
APK0006	Spacer Cell for Maintenance	19

Dual System Manifold Types

PART #	DESCRIPTION	PAGE #
941-215C-A	Manifold Commercial	16
938-SC	Spacer Cell	19

## Soft Touch

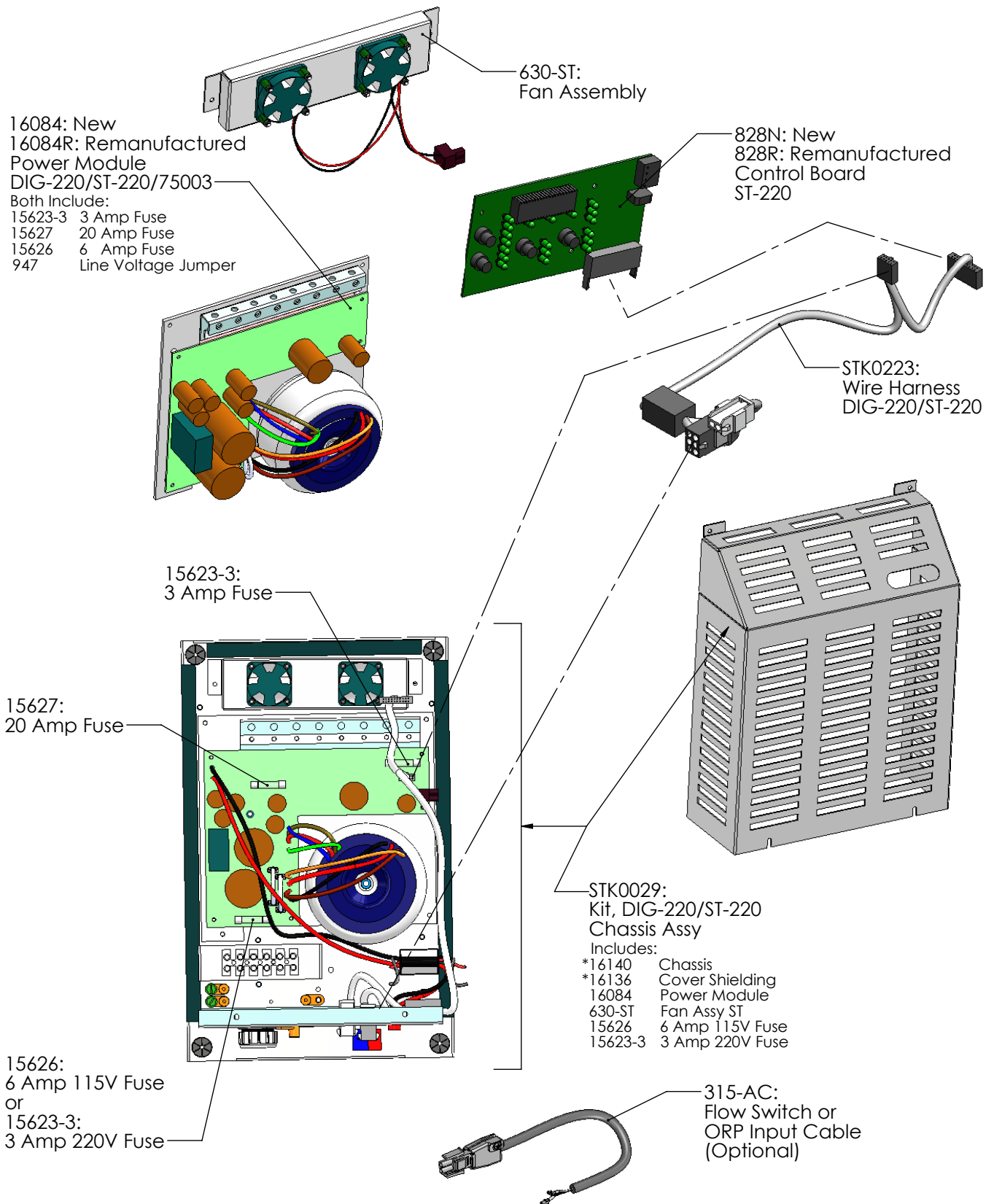
# ST-220 Power Supply Parts



\*Cannot be ordered separately

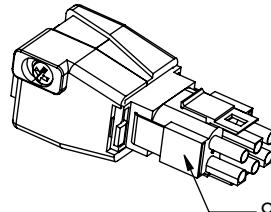
# ST-220 Power Supply Parts

Soft Touch

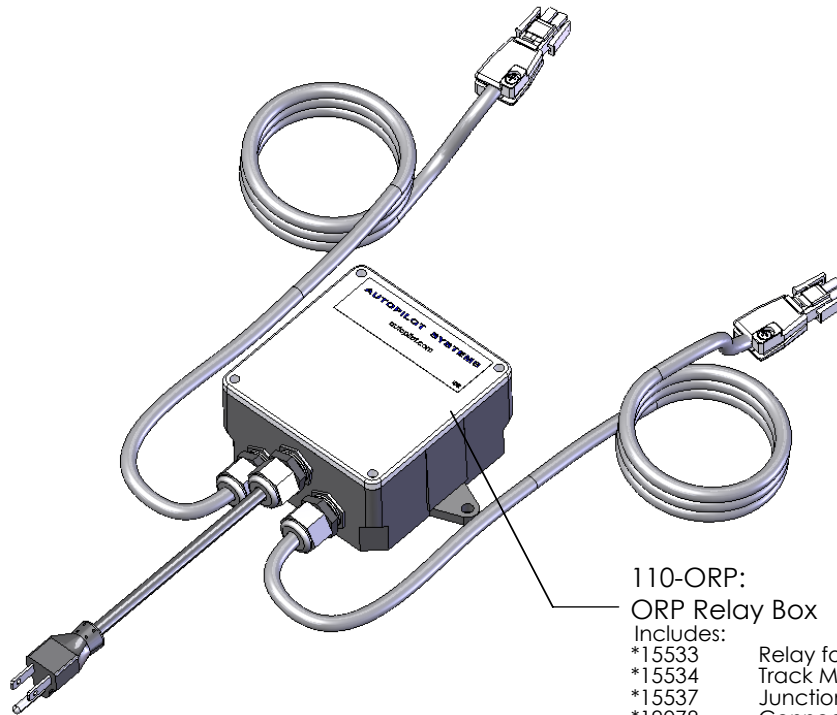


\*Cannot be ordered separately

# POWER SUPPLY ACCESSORIES



986-ST:  
Tri-Sensor Simulator  
(Simulates APA0003)



110-ORP:  
ORP Relay Box

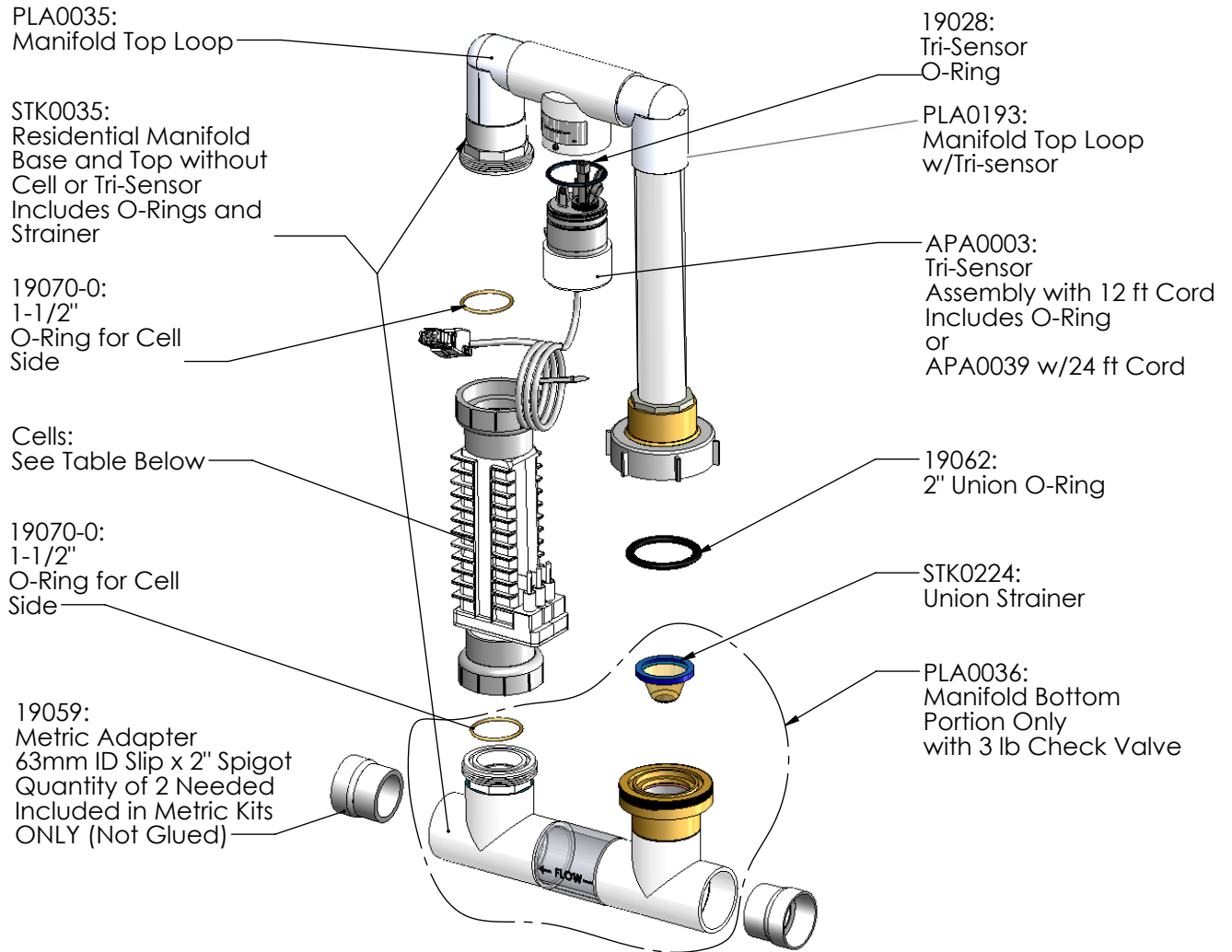
Includes:

- |          |                                   |
|----------|-----------------------------------|
| *15533   | Relay for ORP                     |
| *15534   | Track Mount Socket                |
| *15537   | Junction Box 4x4x2                |
| *19078   | Connector Cable Clamp             |
| *19078N  | Nut for Cable Clamp               |
| *ECA0085 | Flow Switch Cable Assy (12 ft),2X |
| *17220   | Cord 110V #16 AWG (6 ft)          |
| *15402-1 | Screw(s) #6-32 x 1/4 PPMS SS      |
| *ECP0069 | Cable Clamp                       |

\*Cannot be ordered separately

# SINGLE SYSTEM MANIFOLDS

Soft Touch

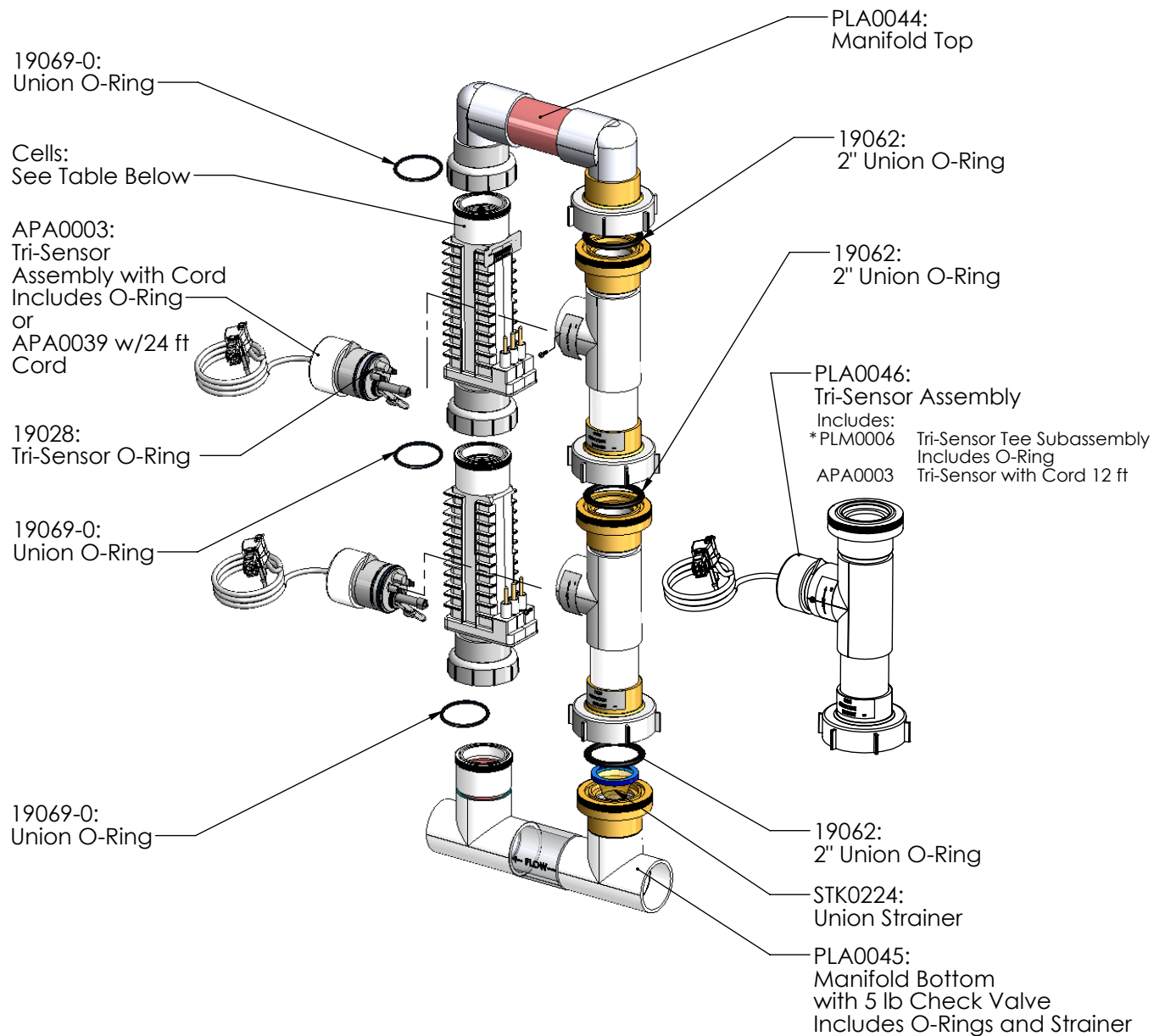


PART #	DESCRIPTION	PAGE #
PPM1	Manifold Assy with PPC1 Cell	17
PPM3	Manifold Assy with PPC3 Cell	17
PPM4	Manifold Assy with PPC4 Cell	17
PPM5	Manifold Assy with PPC5 Cell	17
PPM1M	Manifold Assy with PPC1 Cell and Metric Adapters	17
PPM3M	Manifold Assy with PPC3 Cell and Metric Adapters	17
PPM4M	Manifold Assy with PPC4 Cell and Metric Adapters	17
PPM5M	Manifold Assy with PPC5 Cell and Metric Adapters	17
APK0006	Spacer Cell for Maintenance	19

Soft Touch

# MULTIPLE SYSTEM MANIFOLD

## For Use With Dual Power Supply Systems

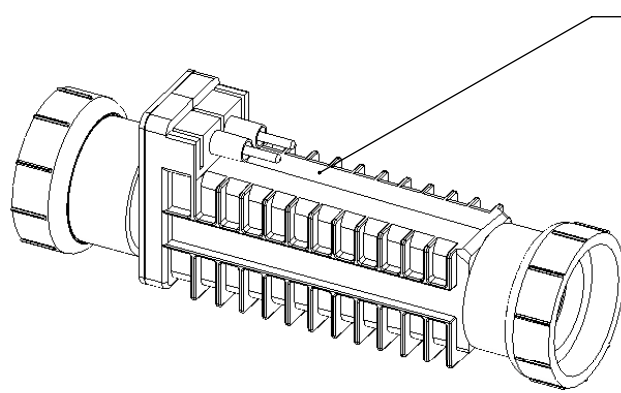


PART #	DESCRIPTION	PAGE #
941-215C-A	Manifold Commerical with 2 PPC5MF Cells	17
938-SC	Spacer Cell for Maintenance	19
To convert from dual to triple system, add PLA0046, PPC5MF and Power Supply of choice, ST-220/DIG-220/75003, typically ST-220 is used.		

\*Cannot be ordered separately

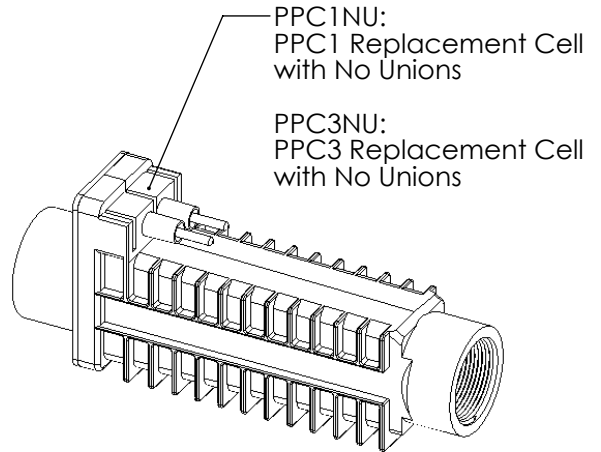
# CELL OPTIONS

Soft Touch



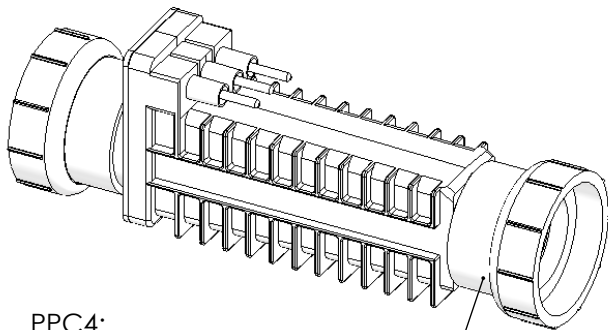
PPC1:  
PPC1 Replacement Cell with Female Unions

PPC3:  
PPC3 Replacement Cell with Female Unions



PPC1NU:  
PPC1 Replacement Cell  
with No Unions

PPC3NU:  
PPC3 Replacement Cell  
with No Unions

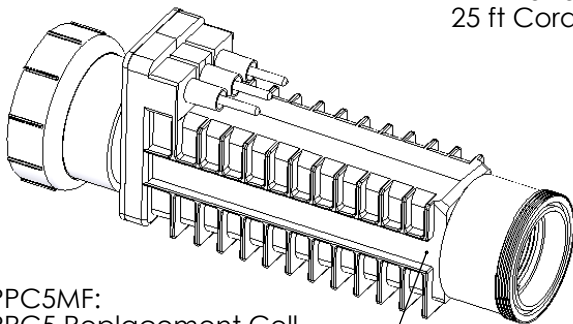
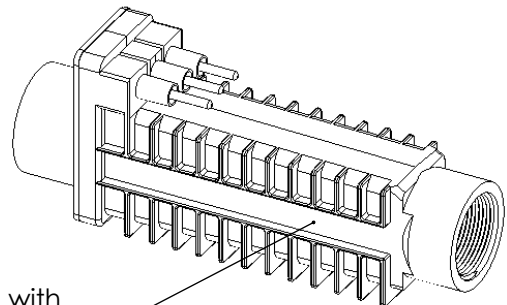


PPC4:  
PPC4 Replacement Cell  
with Female Unions

PPC5:  
PPC5 Replacement Cell  
with Female Unions  
(Commercial)  
for Single Cell Manifold

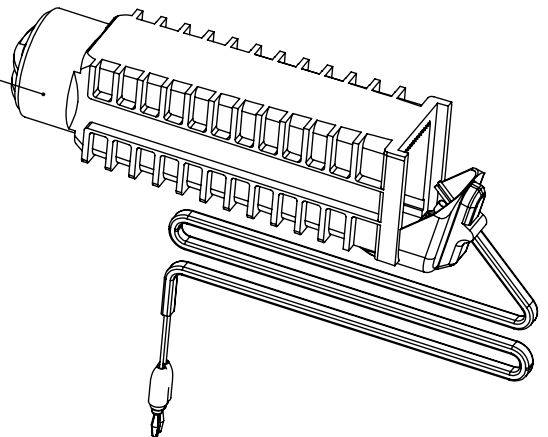
PPC4NU:  
PPC4 Replacement Cell  
with No Unions

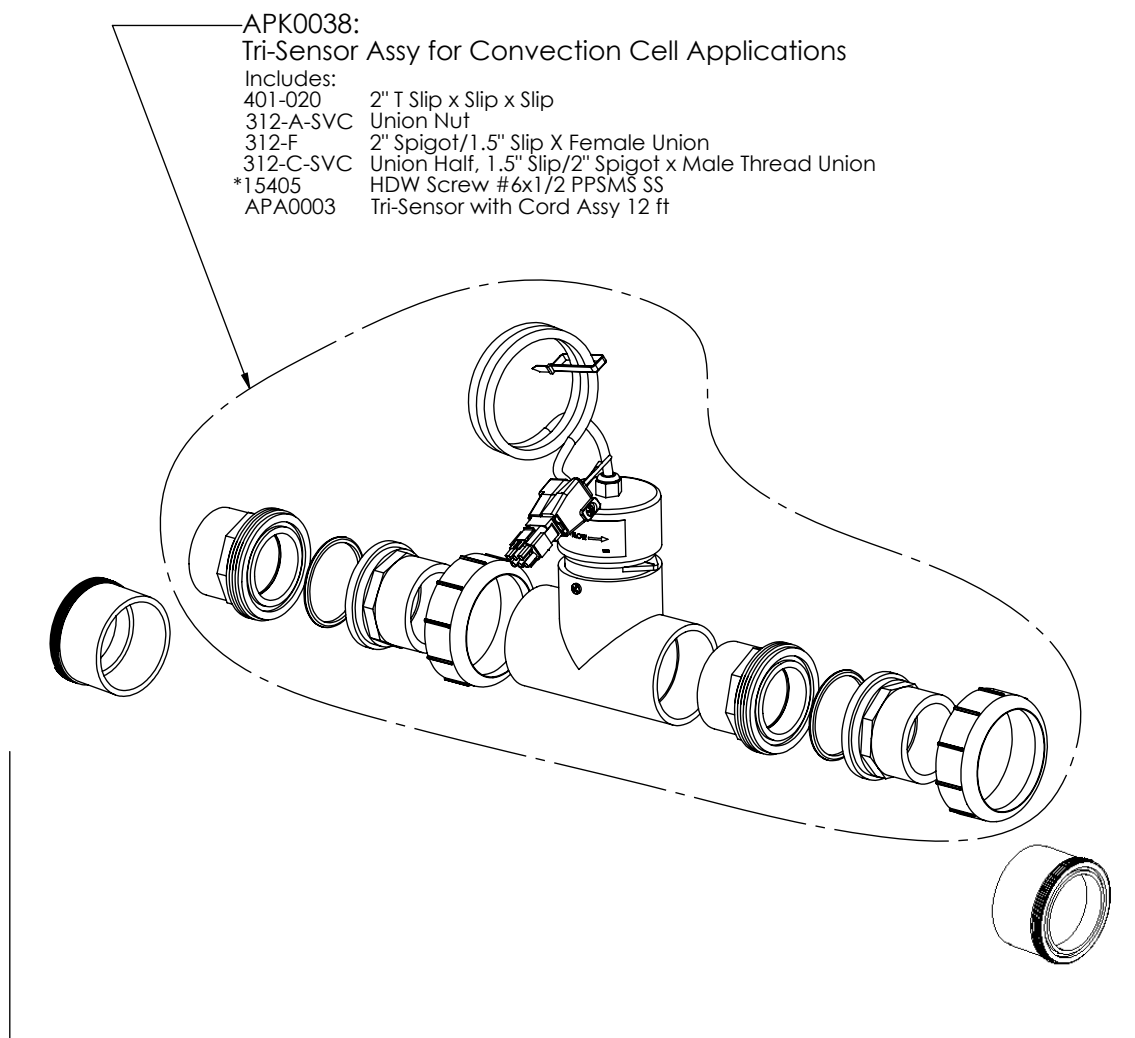
PPC5NU:  
PPC5 Replacement Cell with  
No Unions (Commercial)



PPC5MF:  
PPC5 Replacement Cell  
Male/Female Unions  
(Commercial)  
for Multiple Cell Manifold  
Includes O-Ring

PPC5BPCC25:  
PPC5 Replacement Cell Convection  
with Banana Plugs  
25 ft Cord





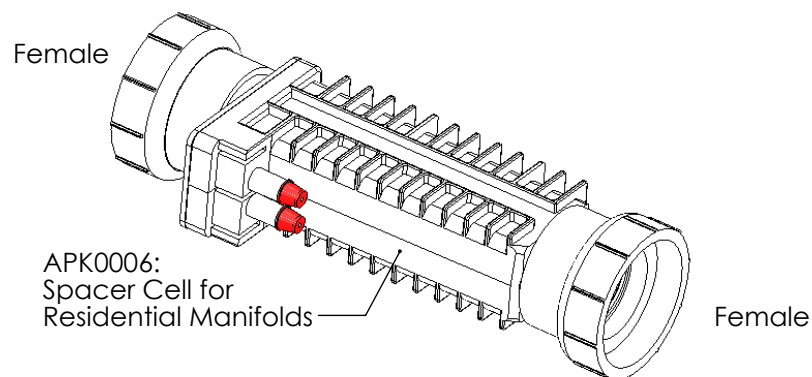
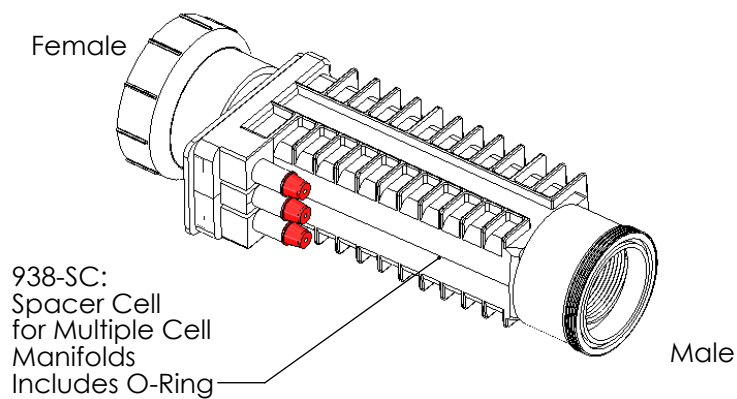
APA0065:  
Inline Conversion Kit  
Same as APK0038 Kit above but with additional two 312-D  
Union Halves, 2" S x MT Union

\*Cannot be ordered separately

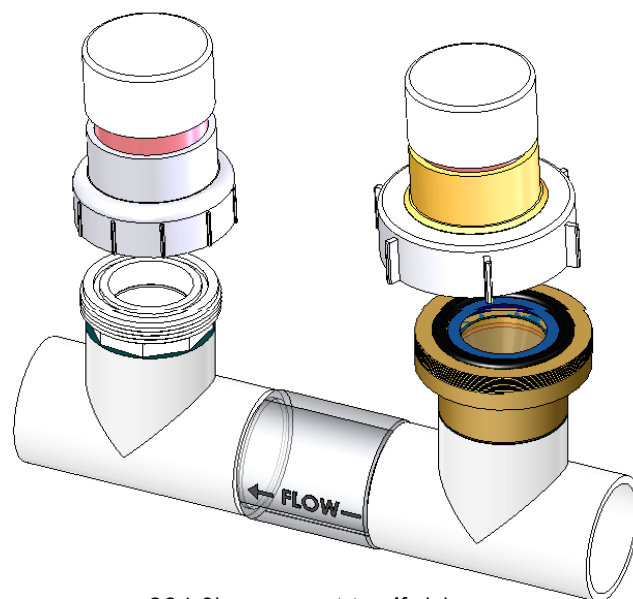
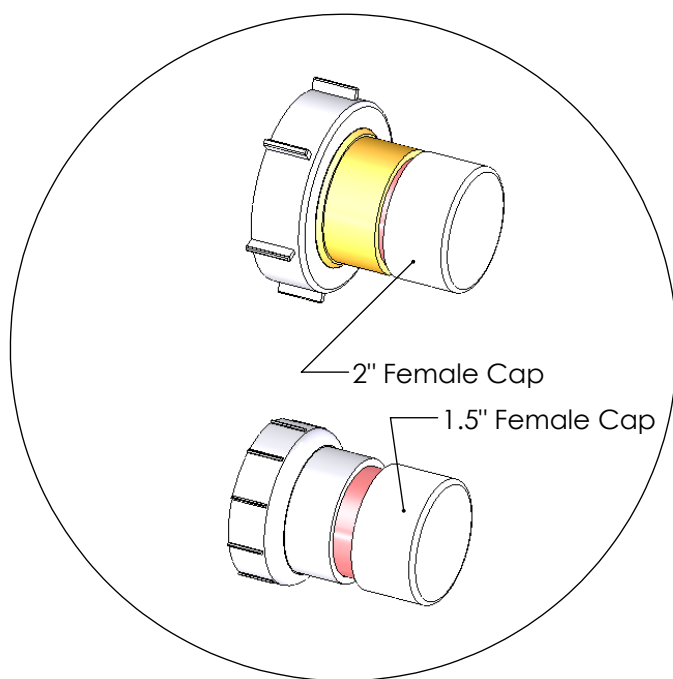


# MANIFOLD ACCESSORIES/TOOLS

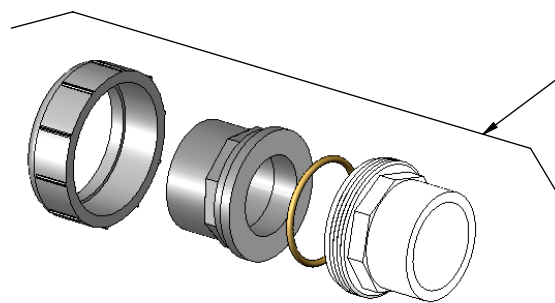
Soft Touch



996:  
Cap Kit



## MANIFOLD ACCESSORIES/TOOLS

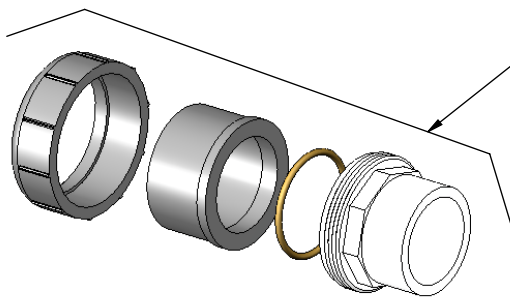


## 19073:

## Union Kit

## Includes:

- |           |   |
|-----------|---|
| 312-A-SVC | Union Nut   |
| 312-F     | Union Half, 2" Spigot/1.5" Slip X Female Union      |
| 19070-0   | 1-1/2" O-Ring                                       |
| 312-C-SVC | Union Half, 1.5" Slip/2" Spigot x Male Thread Union |

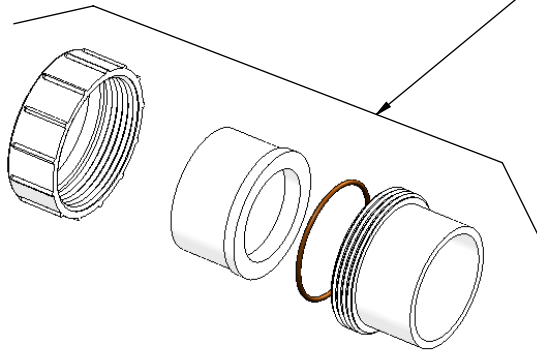


## 19070:

## Union Kit

## Includes:

- |           |   |
|-----------|---|
| 312-A-SVC | Union Nut   |
| 312-B-SVC | Union Half, 2" Slip x Female Union                  |
| 19070-0   | 1-1/2" O-Ring                                       |
| 312-C-SVC | Union Half, 1.5" Slip/2" Spigot x Male Thread Union |



## PLS2627:

## Union Kit

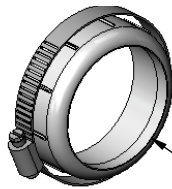
## Includes:

- |           |  |
|-----------|--|
| 312-A-SVC | Union Nut  |
| 312-B-SVC | Union Half, 2" Slip x Female Union                               |
| 312-D     | Union Half, 2" Slip x Male Thread Union<br>(with O-Ring 19069-0) |

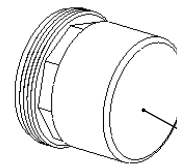
or

## PLS0001:

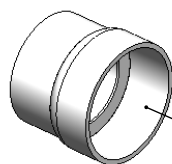
Union Kit-Pack of 10 PLS2627



STK0048:  
Cracked Union Nut  
Service Kit



PLA0113:  
Cell Cleaning  
Kit (Male)



19059:  
Metric Adapter  
63mm ID Slip x 2" Spigot  
Quantity of 2 Needed  
Included in Metric Kits  
ONLY (Not Glued)