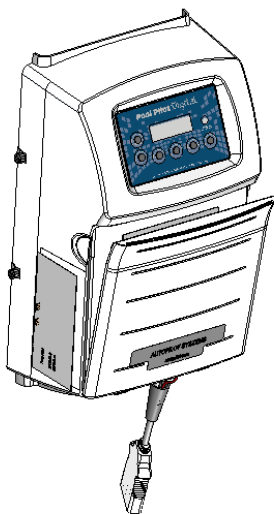
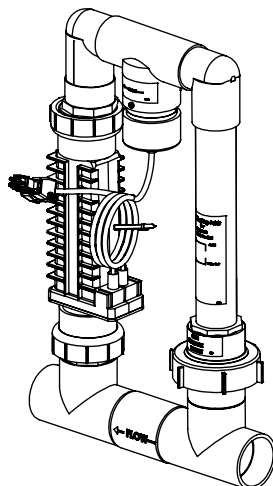


DIG-220

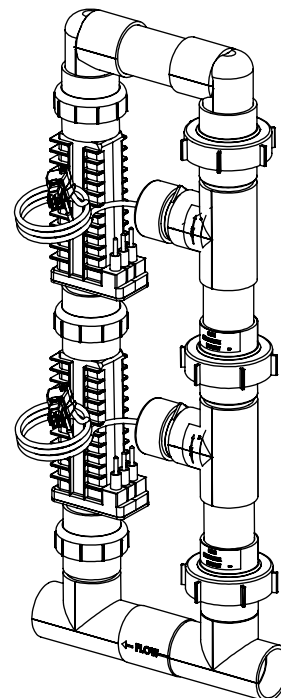
Digital



DIG-220



Single System Manifold



Dual System Manifold

Power Supply

PART #	DESCRIPTION
DIG-220	Digital Power Supply Eng,Esp,Fra,Ita Languages
DIG-220CE	Digital Power Supply CE Version Eng,Esp,Fra,Ita Languages
DIG-220CE-GERMAN	Digital Power Supply Ger,Eng,Esp,Fra,Ita Languages

Single System Manifold Types

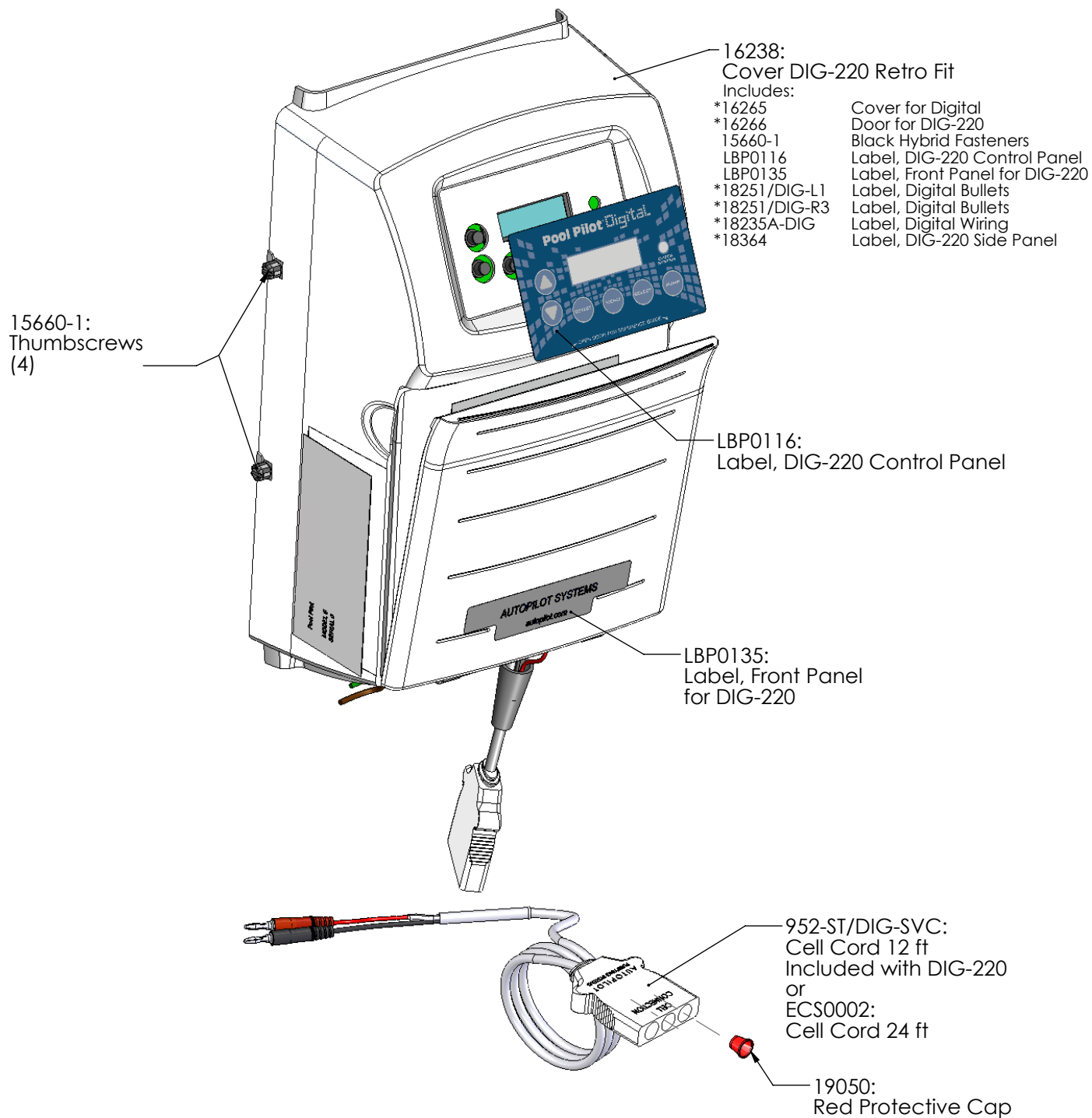
PART #	DESCRIPTION	PAGE #
PPM1	Manifold Assy with PPC1 Cell	5
PPM3	Manifold Assy with PPC3 Cell	5
PPM4	Manifold Assy with PPC4 Cell	5
PPM5	Manifold Assy with PPC5 Cell	5
PPM1M	Manifold Assy with PPC1 Cell and Metric Adapters	5
PPM3M	Manifold Assy with PPC3 Cell and Metric Adapters	5
PPM4M	Manifold Assy with PPC4 Cell and Metric Adapters	5
PPC5M	Manifold Assy with PPC5 Cell and Metric Adapters	5
APK0006	Spacer Cell for Maintenance	9

Dual System Manifold Types

PART #	DESCRIPTION	PAGE #
941-215C-A	Manifold Commercial	6
938-SC	Spacer Cell	9

Digital

DIG-220 Power Supply Parts

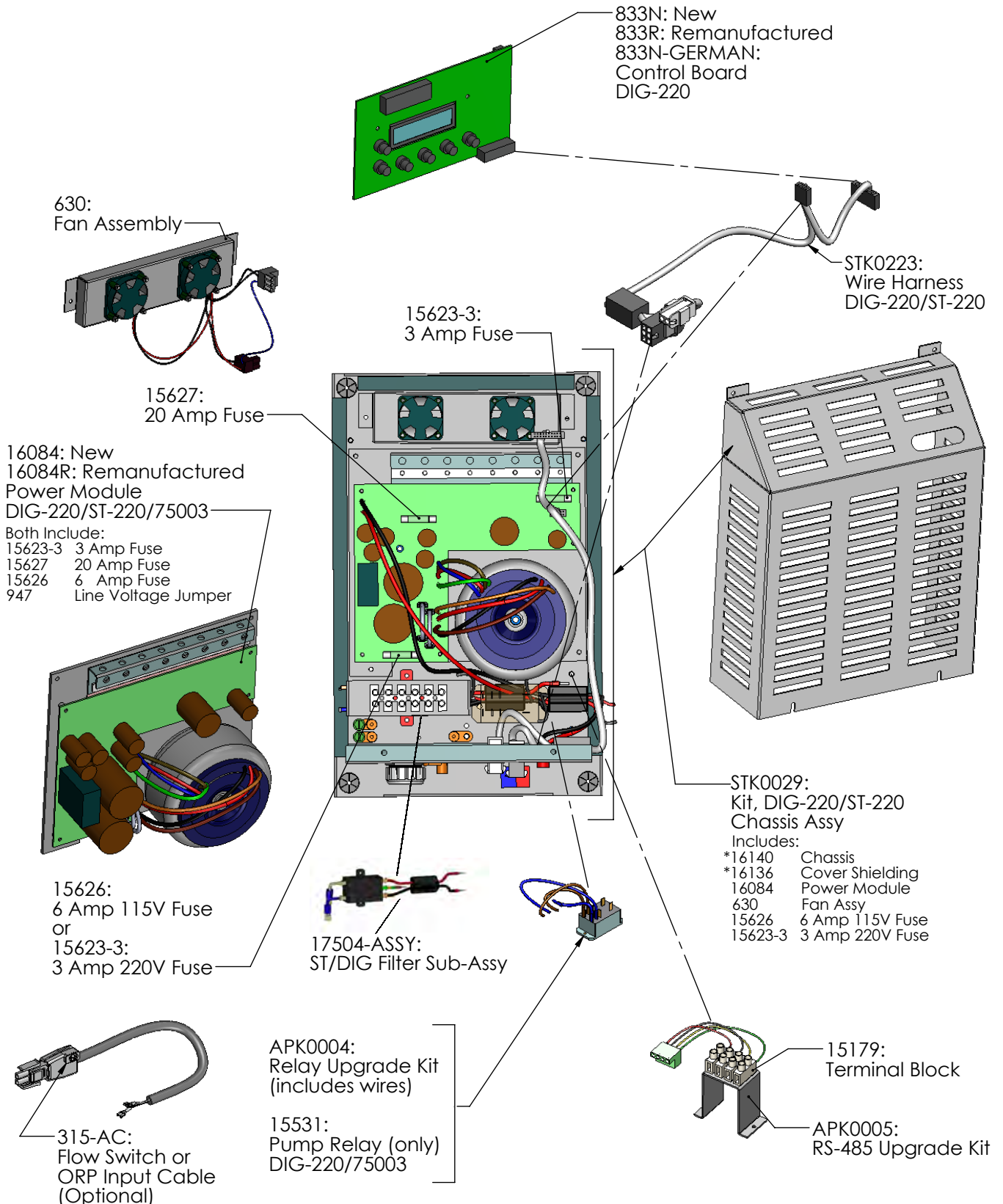


*Cannot be ordered separately

DIG-220

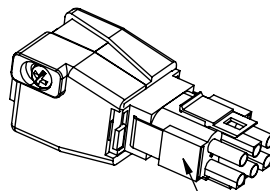
Power Supply Parts

Digital

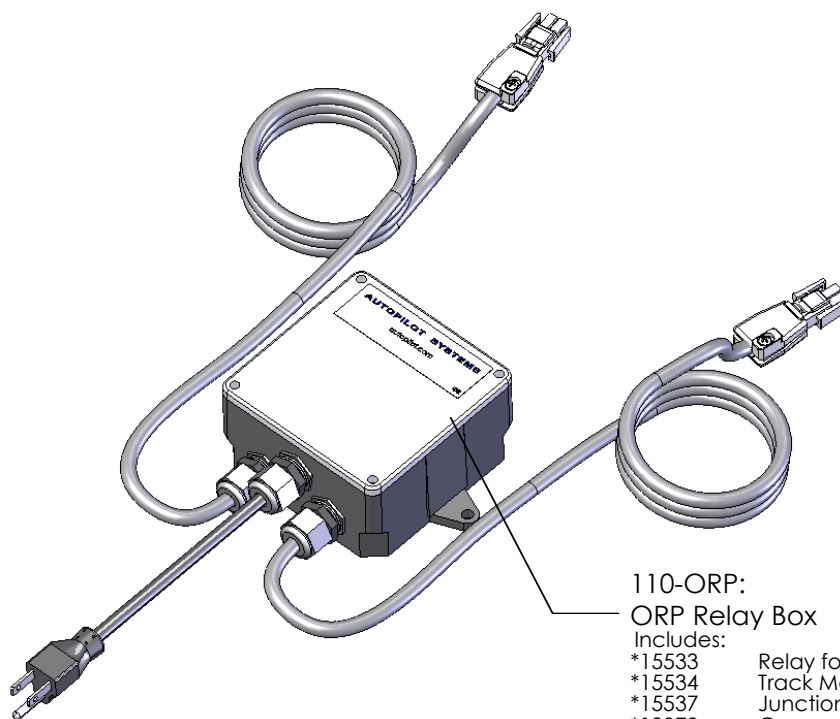


*Cannot be ordered separately

POWER SUPPLY ACCESSORIES



986-ST:
Tri-Sensor Simulator
(Simulates APA0003)



110-ORP:
ORP Relay Box

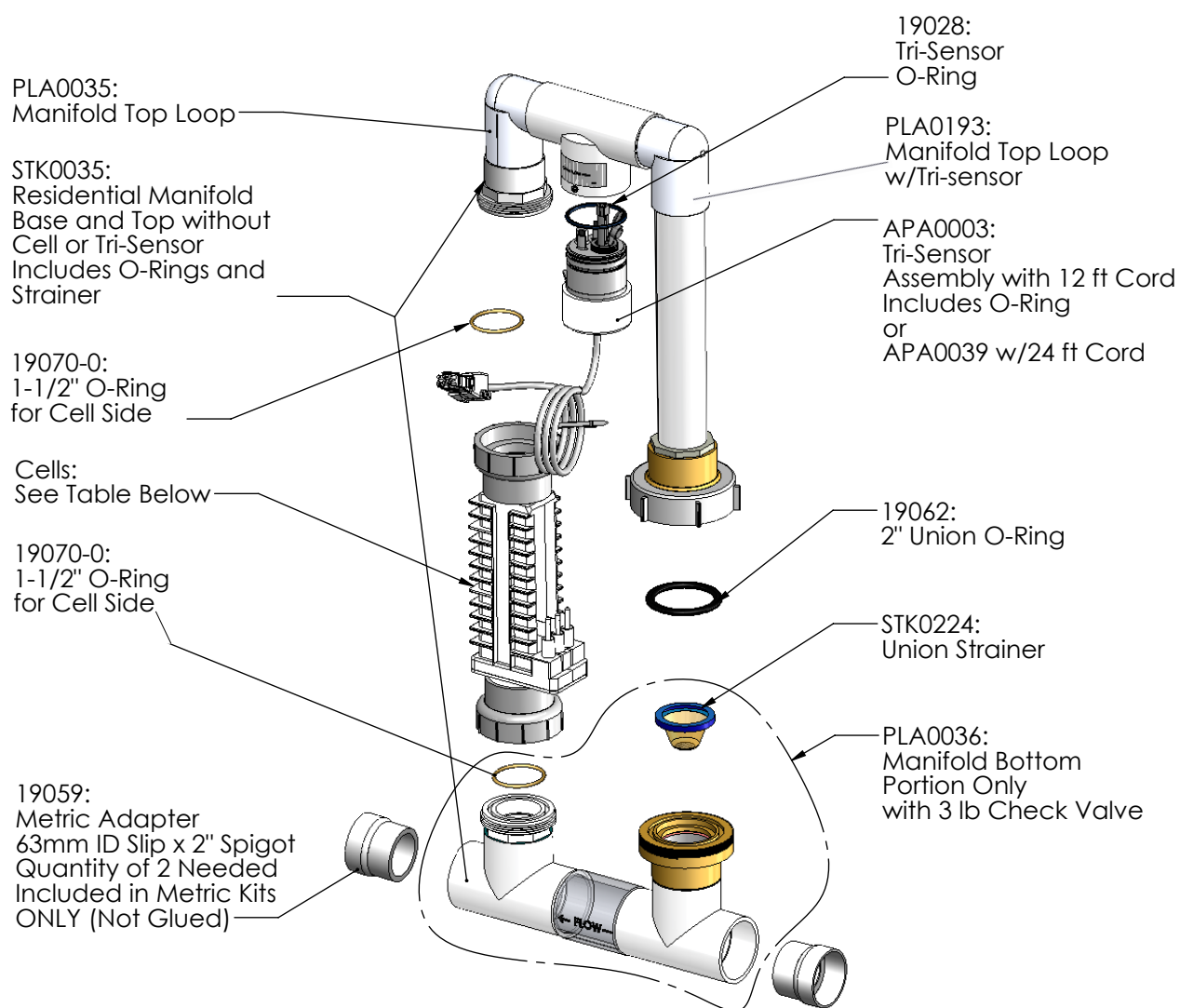
Includes:

- | | |
|----------|------------------------------------|
| *15533 | Relay for ORP |
| *15534 | Track Mount Socket |
| *15537 | Junction Box 4x4x2 |
| *19078 | Connector Cable Clamp |
| *19078N | Nut for Cable Clamp |
| *ECA0085 | Flow Switch Cable Assy (12 ft), 2X |
| *17220 | Cord 110V #16 AWG (6 ft) |
| *15402-1 | Screw(s) #6-32 x 1/4 PPMS S |
| *ECP0069 | Cable Clamp |

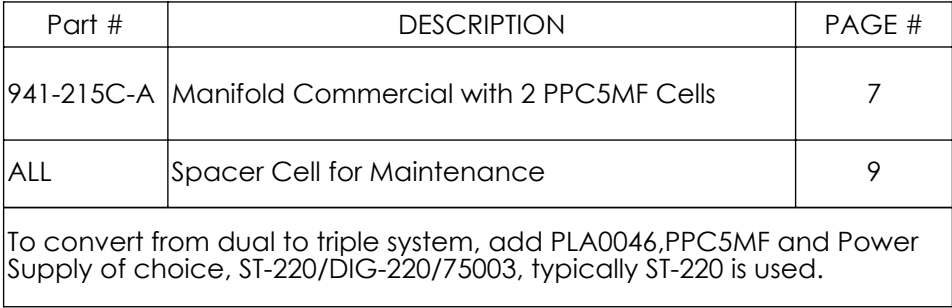
*Cannot be ordered separately

SINGLE SYSTEM MANIFOLDS

Digital



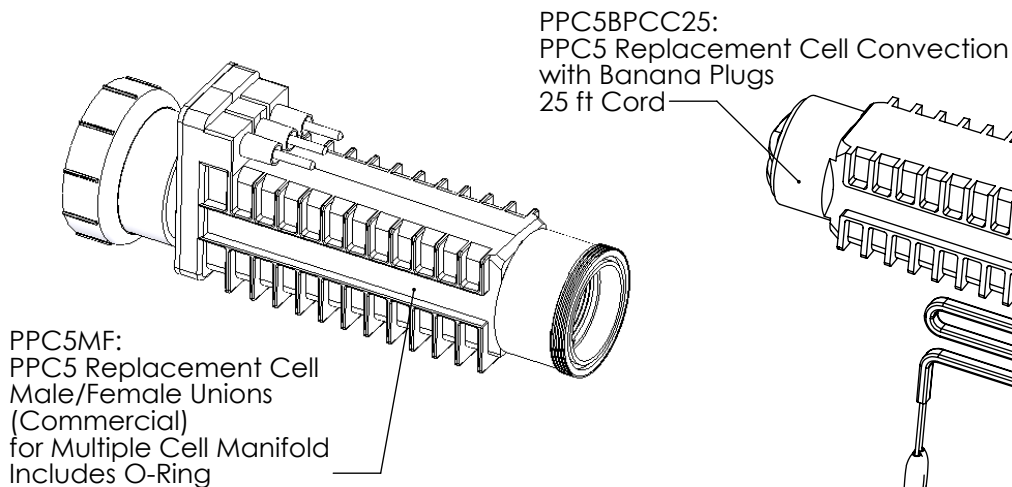
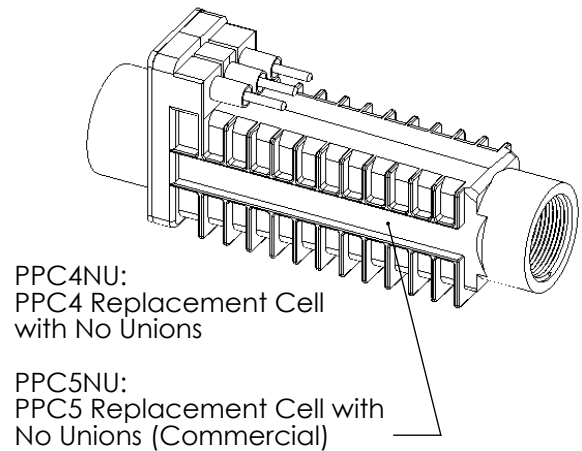
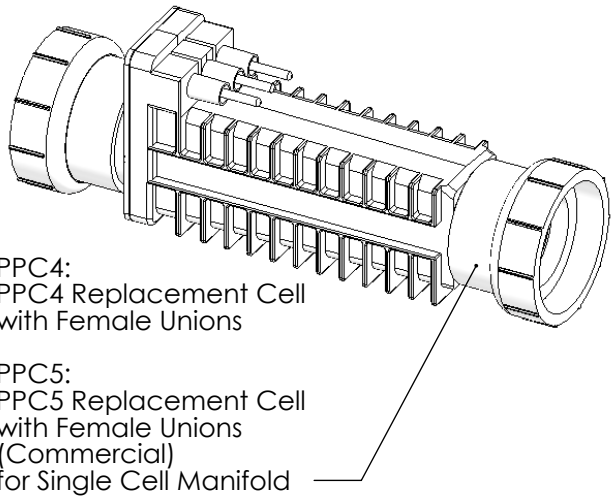
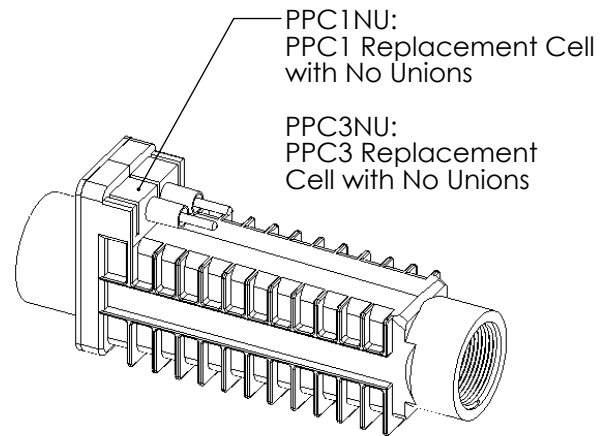
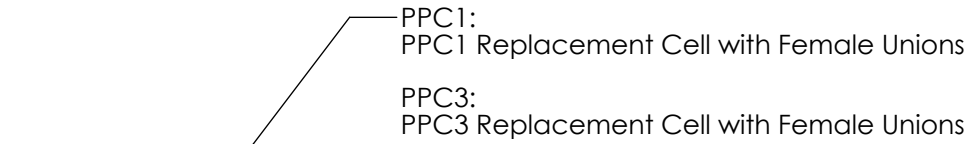
PART #	DESCRIPTION	PAGE
PPM1	Manifold Assy with PPC1 Cell	7
PPM3	Manifold Assy with PPC3 Cell	7
PPM4	Manifold Assy with PPC4 Cell	7
PPM5	Manifold Assy with PPC5 Cell	7
PPM1M	Manifold Assy with PPC1 Cell and Metric Adapters	7
PPM3M	Manifold Assy with PPC3 Cell and Metric Adapters	7
PPM4M	Manifold Assy with PPC4 Cell and Metric Adapters	7
PPM5M	Manifold Assy with PPC5 Cell and Metric Adapters	7
APK0006	Spacer Cell for Maintenance	9



6
LTM0287 Rev 9
09/07/2020

CELL OPTIONS

Digital



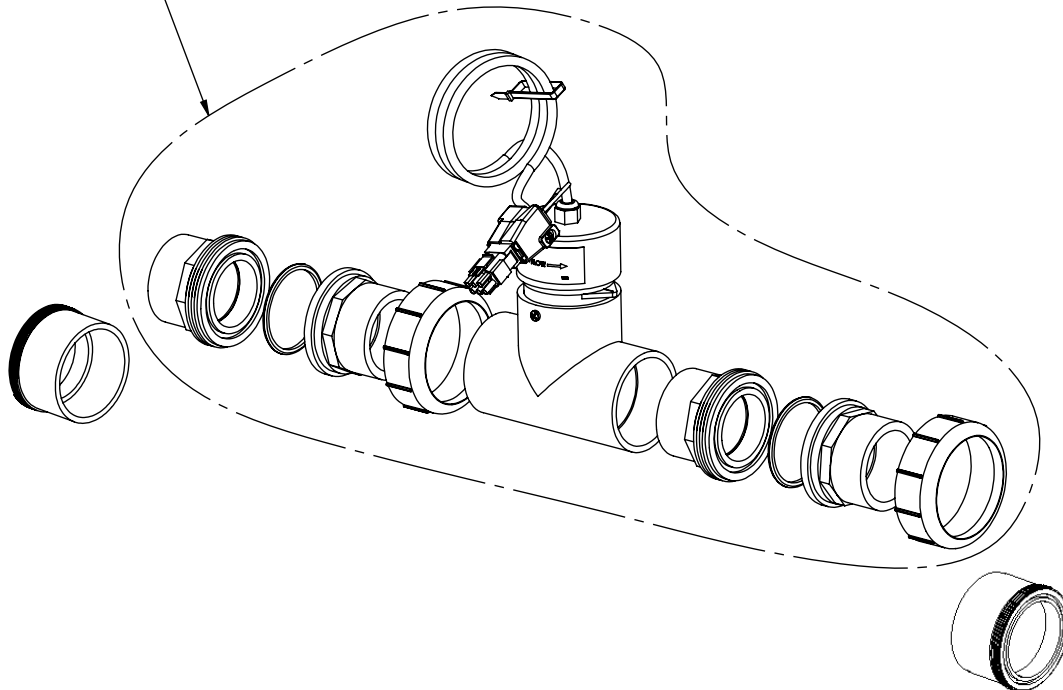
MANIFOLD ACCESSORIES/TOOLS

APK0038:

Tri-Sensor Assy for Convection Cell Applications

Includes:

- 401-020 2" T Slip x Slip x Slip
- 312-A-SVC Union Nut
- 312-F 2" Spigot/1.5" Slip X Female Union
- 312-C-SVC Union Half, 1.5" Slip/2" Spigot x Male Thread Union
- *15405 HDW Screw #6x1/2 PPSMS SS
- APA0003 Tri-Sensor with Cord Assy 12 ft



APA0065:

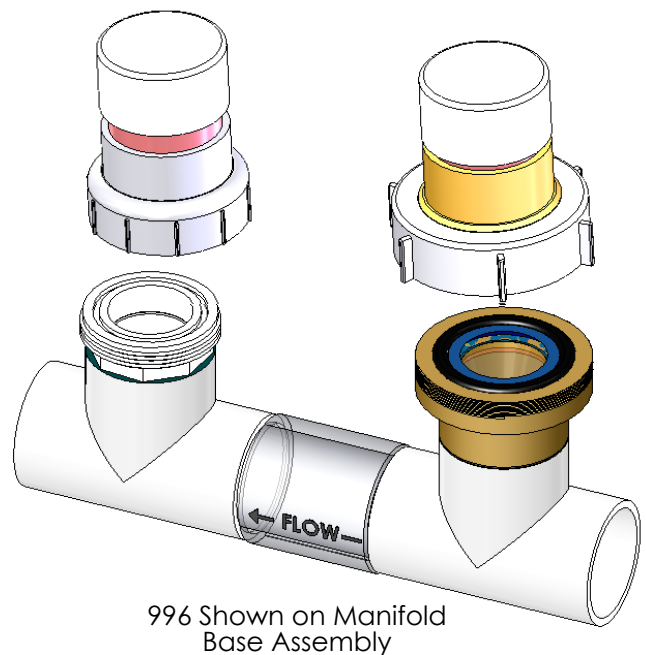
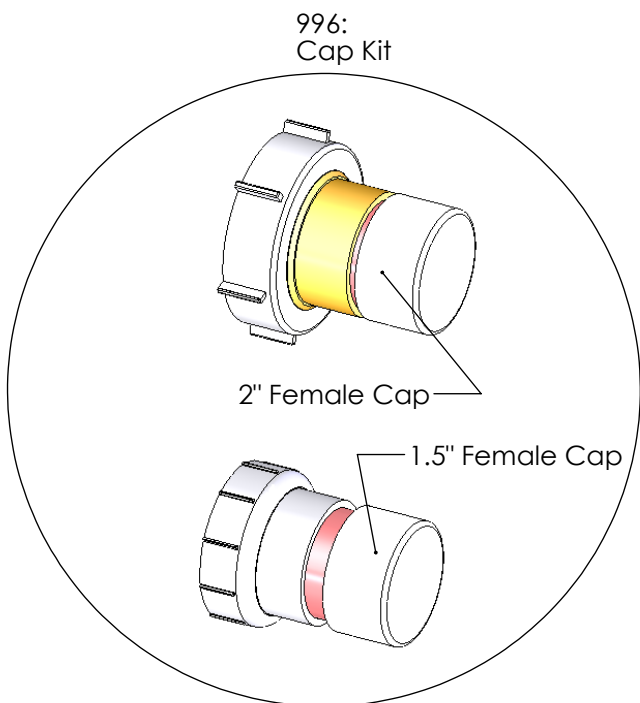
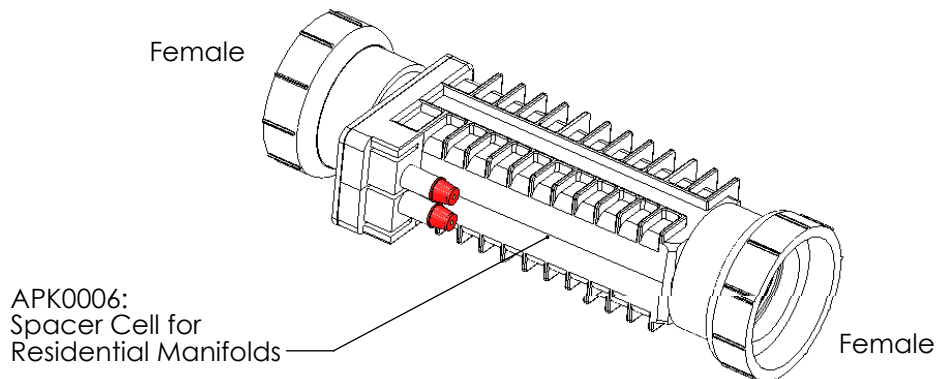
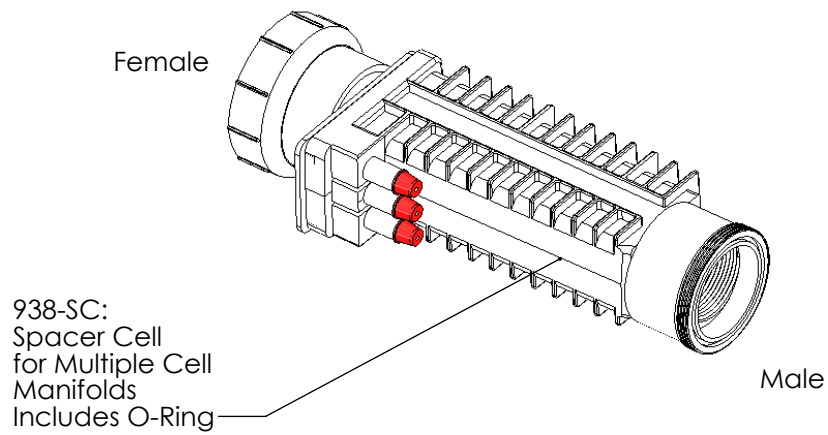
Inline Conversion Kit

Same as APK0038 Kit Above but with Additional Two 312-D Union Halves, 2" S x MT Union

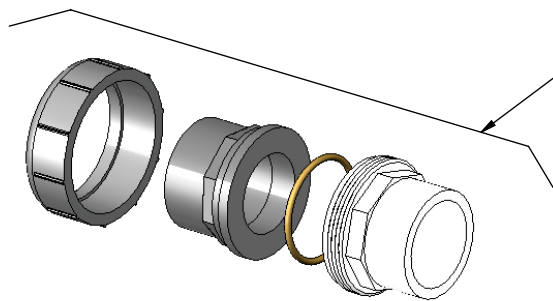
*Cannot be ordered separately

MANIFOLD ACCESSORIES/TOOLS

Digital

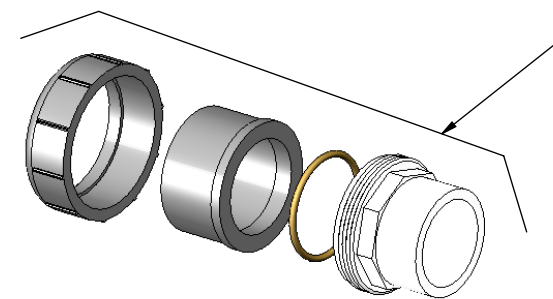


MANIFOLD ACCESSORIES/TOOLS



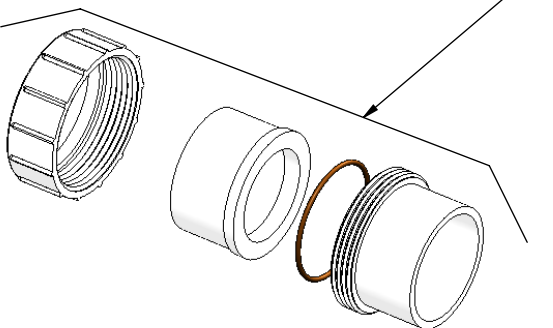
19073:
Union Kit

Includes:
 312-A-SVC Union Nut
 312-F Union Half, 2" Spigot/1.5" Slip X Female Union
 19070-0 1-1/2" O-Ring
 312-C-SVC Union Half, 1.5" Slip/2" Spigot x Male Thread Union



19070:
Union Kit

Includes:
 312-A-SVC Union Nut
 312-B-SVC Union Half, 2" Slip x Female Union
 19070-0 1-1/2" O-Ring
 312-C-SVC Union Half, 1.5" Slip/2" Spigot x Male Thread Union



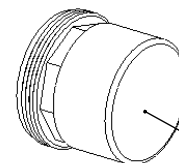
PLS2627:
Union Kit

Includes:
 312-A-SVC Union Nut
 312-B-SVC Union Half, 2" Slip x Female Union
 312-D Union Half, 2" Slip x Male Thread Union
 (with O-Ring 19069-0)

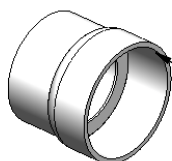
or
 PLS0001:
 Union Kit-Pack of 10 PLS2627



STK0048:
Cracked Union Nut
Service Kit



PLA0113:
Cell Cleaning
Kit (Male)



19059:
Metric Adapter
63mm ID Slip x 2" Spigot
Quantity of 2 Needed
Included in Metric Kits
ONLY (Not Glued)